



Canterbury Road Primary School

Prospectus 2024/25

'A friendly happy place to learn'



Canterbury Road Primary School Prospectus



Contents

Head Teacher's Welcome

Our Philosophy

About Our School

Partnership with Parents

Safeguarding

Promoting Positive Behaviour

The Foundation Stage

The Curriculum

Including All Children

The School Day

Lunchtimes and Homework

Educational Visits

Charging Policy and Events

Absence and Medicines

Admissions and School Leavers

School Uniform

Current Data

Staffing

Term Dates



Head Teacher Welcome

I wish you a very warm welcome to the Canterbury Road family!

Thank you for your interest in our school. We pride ourselves on being welcoming to all and on providing high quality teaching to pupils. We are an inclusive school and we work hard to make our families feel part of the school and as happy to come here as our pupils.

We are well-staffed with high pupil: staff ratios and are well resourced. Our curriculum is interesting and varied and ensures children know about the world around them.

We are a nurturing school and so our children behave well and feel secure. Our Learning Mentor supports children who need a little extra TLC or intervention and our Family Liaison Officer is always at hand to help parents, carers and families. We even have a school dog who cheers up anyone who meets her!

This website is new and being added to all the time so I hope you find what you need.

If you have any questions then please contact us
office@canterbury-road.kent.sch.uk or 01795 423818.

We all look forward to meeting you.

Mr T Pye

Headteacher

Our Philosophy

Canterbury Road – 'A friendly happy place to learn'

This motto was devised by children, parents, staff and governors and it underpins all our work here at Canterbury Road.

Our Aims

Our school aims were also devised by the whole school community and sum up our values and commitment to high quality education and care.



About Our School

Canterbury Road Primary School is a one form entry school educating children from ages 4 - 11 years old across 7 classes. We have one class per year group and each year the children choose the names of their class based on a common theme. In previous years they have been named after unusual animals, prominent female leaders, countries, artists and colours. The exception to this is our Reception Class who remain as Bumble Bees every year.

Each class has a class teacher and class teaching assistant as well as additional members of staff who run intervention groups, speech and language groups or provide 1:1 support for children who need it. Each class is also assigned a midday meal supervisor who stays with the class for the whole of lunch time each day.

At Canterbury Road we also have a wonderful team of support staff including two office based staff, our SENCO Mrs Coldwell, our Family Liaison Officer; Debbie and our Pastoral Lead Mrs Christie. We also have a school dog, Bea who is used as emotional and wellbeing support for the children and staff.

Canterbury Road is a small school serving a tight knit community. Our size allows every child to know every member of staff and for every member of staff to know every child. Some staff also know siblings, parents and great grandparents as we have several generations go through the school. Within days of joining us new members of staff and new pupils feel like family.



Partnership with Parents

Successful education of children relies on a positive partnership between home and school. We are proud of our strong relationships with parents and families and value your opinions and ideas. The staff are always available to discuss your child's welfare or education and we value and need your support to ensure they have a happy, successful and productive time here at Canterbury Road. We hold three parent's evenings each year and send an annual written report of achievement home in the summer. You will often be invited to special assemblies, festivals, workshops and shows to celebrate your child's success and build the feeling of 'community'.

'The Willows' is our purpose built extended schools building at the top of the school where the Family Liaison Officer, Debbie, is based. She can help you with any issues from housing to adult courses and works everyday and is always on the gate morning and evening for a quick chat. The Willows is also the hub of our community programme including parent/toddler group and much more.

COMMUNICATION

We know how important it is for you to know what is happening in school and parents are informed of events and news through regular newsletters, texts and emails.

Teachers are usually available after school to discuss any concerns or you can make an appointment to see the EYFS/Key Stage 1 leader, Mrs Martin, or Key Stage 2 leader and deputy headteacher, Mrs Brown.

Parents, Teachers and Friends Association (PTFA)

Canterbury Road is fortunate to have a very supportive Parents, Teachers and Friends Association. These volunteers arrange and run the popular Christmas and Summer fairs/Fun days as well as organise events during the year such as discos and barbeques to raise additional funds and promote our sense of community.

The funds raised subsidise school trips and have provided playground equipment and new kits for sports club. Any member of a pupil's family is welcome to attend, either to help out behind the scenes or as a committee member. Please see the office if you are interested, or visit the PTFA Facebook page.



Safeguarding

CHILD PROTECTION AND SAFEGUARDING CHILDREN

We take the safety and well being of the children at Canterbury Road very seriously and have a number of school policies and systems in place to ensure that the children in our care are kept safe. These include the Child Protection Policy and Anti Bullying Policy which are available on our website or from the office on request.

The school follows the Kent 'Safeguarding Children in School's' guidance and only employs staff who have satisfactory references and an enhanced DBS (formerly CRB) check. If we are concerned about the welfare or safety of any child we will usually ask parents to meet with the Designated Safeguarding Lead; Mr Pye (or Mrs Brown, Debbie or Mrs Martin in his absence) and may refer on to other agencies.



Positive Behaviour

We are proud of our children at Canterbury Road and our school rule of

'We are respectful'

ensures that children treat each other in a positive way and fosters a safe and happy place of learning.

This rule applies to all children and is supported by simpler rules that explain the concept of respect to younger children. Sanctions and rewards are the same in Years 1-6 meaning consistency and fairness. Each child starts the week with an entitlement of 30 minutes of 'Golden Time' which is a fun activity time as a reward for good behaviour. Minutes are deducted from this for breaking school rules although, to encourage positive behaviour, these lost minutes can be won back by demonstrating good behaviour.

Occasionally children exhibit challenging behaviour and we seek parents' co-operation to resolve these difficulties. In most cases these are resolved easily but sometimes an individual behaviour plan or report card is set up in cooperation with the school, parents and child. A full copy of the Behaviour Policy with further details of all the aspects mentioned on this page is available on the school website or from the school office.

Children are rewarded for good behaviour by receiving house points and through praise. Every Friday a child from each class is chosen to be 'Star of the Week' and their achievements celebrated in assembly and a certificate taken home. Their photo is put up in the entrance hall so that all visitors and pupils can share in their success.

Kindness tokens are given out by staff or children for politeness, kindness and courtesy. These encourage good manners and reinforce our ethos. Four of these are drawn in assembly every week and children receive a small prize.

At the end of Terms 1, 3, and 5 a child from each class is awarded 'The Brightman Shield' for kindness or thoughtfulness, and at the end of terms 2, 4 and 6 two children from each class are awarded the 'Lockyer Shield for Endeavour' in recognition of outstanding achievement in any area of school life. Parents of these children are invited to join this assembly and celebrate with us.



Reception Class- The Foundation Stage



Children join the reception class in the September of the academic year in which they are five. We hold open days in the previous autumn so parents and children can visit and ask questions and children can experience 'big school'.

Children who secure a place at the school are then invited to open afternoons in the summer term before they start so children and parents can meet staff and ensure a smooth start. In September, the children attend school for reduced sessions in the first two weeks to get them used to school routines.

The Foundation Stage is exactly as it sounds; the foundation on which further development and learning are built.

It is an invaluable step between the pre-school/home experience and the classroom. In the reception year we nurture our children, guiding their all-round learning and development in the three prime areas of learning - communication and language, physical development and personal, social and emotional development and the four specific areas of literacy, maths, understanding the world and expressive arts and design.

Our Reception children benefit hugely from a very well resourced classroom and outdoor area and from excellent teaching staff which includes three teaching assistants. Learning is mostly planned through play and based around topics.

The play-based curriculum continues into the start of Year 1 to enable a smooth transition and meet the needs of these still very young children.



The Curriculum



CONTENT AND ORGANISATION OF THE CURRICULUM

The curriculum at Canterbury Road is developed from The National Curriculum. The curriculum is structured in order to provide appropriate learning steps as children progress. The school's curriculum documents are available to parents on the school website.

The children generally have an English, Maths and phonics/spelling/grammar lesson each day. Reading lessons take place at least three times a week. Other subjects such as science and history are taught throughout the week.

Pupils are taught in a variety of ways. Sometimes the whole class will be involved in the same activity but often children are split into groups of either similar or mixed ability. Group or paired work is used to foster co-operation and teamwork but also so children can learn from each other and develop language skills. Whenever possible, lessons are practical and investigative and are always tailored to the child's age and ability.

Children's progress in each lesson is monitored and achievement in English and Maths is assessed every term. Learning is assessed at the end of each lesson and this assessment enables the teacher to adapt and amend their teaching to the needs of the child and identify any children having difficulties and needing additional support or more challenging work. Each child's progress is reviewed termly to ensure they are on track to meet the expected standard by the end of the year. Children who are falling behind, or are not making as much progress as we would expect are given extra support.



ENGLISH

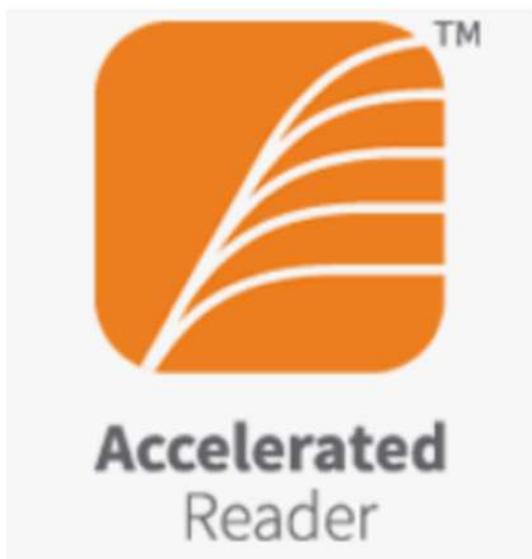
This subject is fundamental to future success and we place great importance on children's ability to communicate with confidence. The ability to speak confidently and listen for meaning are vital skills for all children and adults and much of our work, particularly at the very early stages of school, focuses on these skills.

Reading

The school has an excellent range of reading books and we encourage a love of books and reading from the Reception class. Each class has a class library with a range of texts including fiction, non-fiction and poetry and these are added to and renewed regularly to keep interest high. Children are taught to read through a systematic phonics programme called 'Little Wandle' and by learning early comprehension skills.



Children take part in Guided Reading each day where children are encouraged to read in small groups and provide an opportunity for the child to independently apply and practise reading strategies that have been recently taught.



From Reception, children bring home a book to read to parents and a library book to share which parents/carers can read with them. Children who are reading fluently start on the Accelerated Reading Scheme which is based on 'real books' and encourages the child's enjoyment and comprehension of texts.

Parents are invited in to attend workshops of Phonics when their child joins Reception and Accelerated Reader when their child reaches Year 3.

Writing

We believe that all children should think of themselves as ‘writers’ and so encourage them to write in their own way when they start school and provide activities to promote this writing and build confidence and skills. During Reception (Foundation Stage) children are taught the sounds of letters and how to form them and so begin to learn the skills of what we would call ‘writing’. Over time children learn to punctuate, construct interesting sentences and write in different genres such as stories, reports and instructions.

Speaking and Listening

We provide a wide variety of activities and opportunities both in literacy lessons and across the curriculum so children can improve and practise these skills. These include role play and drama, for example, when pretending to be the ‘Big Bad Wolf’ or taking on the role of Elizabeth I in history lessons.



MATHEMATICS

The National Curriculum for Maths covers these areas – number, measurement, geometry and statistics. The National Curriculum focuses very strongly on a child's confidence and competence with numbers and requires an understanding of the number system, a repertoire of computation skills and an inclination and ability to solve number problems in a variety of ways. It demands practical understanding of the ways in which information is gathered by counting and measuring, and how it is presented in graphs, diagrams, charts and tables.

Mental calculation forms an important part of the daily maths lessons. All these skills are taught from the early years with a strong focus on practical learning and skills. More formal methods are taught as the children progress through the school. Canterbury Road currently uses White Rose Mathematics scheme to aid with maths delivery across the school.

SCIENCE

Science in the National Curriculum is concerned with developing the skills of scientific enquiry through developing knowledge and conceptual understanding, learning about nature, processes and methods and about how science is important in our lives. It is based on practical experience wherever possible to inspire, interest and motivate learning and includes opportunities for observation, measurement, communication, recording, predicting and problem-solving. Lessons are enhanced by trips whenever possible.



COMPUTING

Computing is an integral part of teaching at Canterbury Road. Computing skills are taught through specific lessons in the Computing Suite and in other subjects. Use of computing to solve problems is a key skill and pupils use digital cameras, data loggers, Kindles and iPads to enhance their learning. The school has a rigorous 'Safer Use of the Internet' policy, which includes details of the filtering systems and children are taught how to use the internet safely and are supervised when doing this.



PERSONAL, SOCIAL AND HEALTH EDUCATION (PSHE)

The development of children's interpersonal and intrapersonal skills underpins all our work at Canterbury Road. These include skills of self awareness, empathy, self confidence and understanding others. These are taught through weekly PSHE lessons and are part of our ethos.

School Council

Each class from Year 3 to Year 6 elects representatives to present their views at regular council meetings. These enable all children to have a 'voice' in school. The school council have recently been involved in choosing playground equipment and their opinions are invaluable to us.



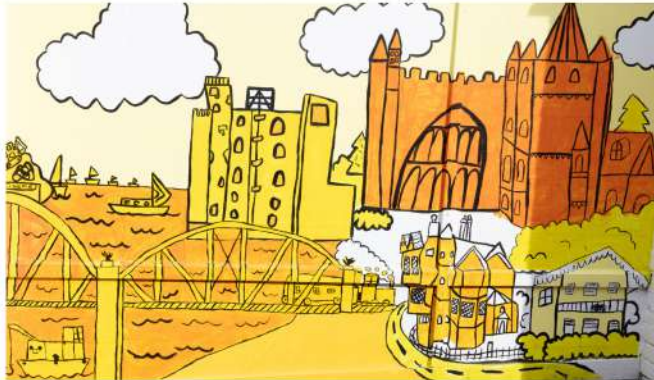
SEX AND RELATIONSHIPS EDUCATION

This area is taught with regard to the age and maturity of children and begins during the early years when children learn about how young animals and babies are looked after. Over time, science and PSHE lessons cover how to be healthy, how bodies change and how to deal with feelings.

During Year 5, with parental permission, pupils learn about puberty and in Year 6, learn about reproduction and healthy relationships.

DESIGN TECHNOLOGY

Design and Technology offers pupils opportunities to become creative problem solvers, through designing, making, evaluating and improving their work and ideas. Children are encouraged to work to design briefs which are related to their own lives or to other areas of learning, for example to use their scientific knowledge to make a torch.



ART

Art is about developing children's creativity and imagination using a range of techniques and media, such as print making, clay sculpture, painting, sketching and textiles.

Children relate their own ideas to those of famous artists and use this to inspire or shape their own work. Art work is displayed around the school and we often hold creativity weeks when art, DT and other creative learning is promoted and celebrated.

HISTORY

Pupils learn about the history of Britain and other parts of the world. They learn about the important events, time periods and people and ask how the world has changed to the modern day they are living in. They learn to ask questions and evaluate interpretations. Skills pupils have learnt in English, Art and Science translate across to History as they learn about the Gunpowder Plot, Victorian England, The Battle of Trafalgar, Ancient Rome, Ancient Egypt and World War II.



GEOGRAPHY

Pupils undertake studies to develop a sense of place at both local and global level. They learn about places and people and how these influence each other. They look at maps and plans and learn geographical language. Trips enhance this learning and give first hand knowledge to develop skills and understanding.



PHYSICAL EDUCATION (PE)

Through PE, children learn to control their bodies, build physical and mental strength and dexterity and develop confidence and teamwork. Children learn these skills through a variety of activities in gymnastics, games, athletics, dance, swimming and outdoor education.

The curriculum is enhanced through active break times and a range of after school clubs.

MUSIC

In these lessons children listen to, play and talk about different music and learn musical terms. They sing and play percussion and instruments and compose their own music. Children are introduced to a variety of different songs and music styles.

MODERN FOREIGN LANGUAGES (MFL)

Children at Key Stage Two learn to speak, read, write and listen to basic French. They learn about other cultures and a sense of curiosity is fostered.



RELIGIOUS EDUCATION

Religious Education is a compulsory part of the curriculum and at Canterbury Road we follow the Kent Agreed Syllabus.

Children have the opportunity to discuss and learn about a variety of religions and to consider a variety of issues, reflecting on their and other's views and beliefs.

As part of our inclusion and community of all faiths and religions pupils use Religious Education to share their own beliefs, cultures and celebrations. Children are given an opportunity to celebrate Diwali, Eid, Christmas, Easter and Chinese New Year and explain why it is important to them.

Including All Children

All children develop at different rates and have different strengths. At Canterbury Road, we ensure that children's varying needs are planned for to ensure they progress and achieve their best. We emphasise inclusion of children as much as possible, ensuring that children requiring additional support are not separated or feel stigmatised.

Mrs Coldwell has special responsibility for developing the inclusion provision at our school and is called the 'SENCO'. Children who are not making progress expected, or those who have Additional Needs in the following areas— Cognition and Learning, Communication and Interaction, Social, Emotional, and Mental Health difficulties and Physical and/or Sensory may be deemed as having special educational needs including disabilities (SEND). These children receive support in the form of an intervention programme or access to additional staff to meet their needs.

It is important to identify children's strengths and areas for development as early as possible. This is achieved through collecting information prior to schooling as a result of parent conferencing and pre-school records. If we believe your child needs extra support or challenge, you are informed in writing and are able to meet with the Inclusion team to discuss this.

If your child has a serious medical condition, staff will draw up a 'care plan' with you that details their condition, symptoms and emergency treatment. Parents/Carers of children whose child is identifying as transgender should speak to the headteacher.

We will work with you to ensure your child, and every child is included, valued and happy.



EQUAL OPPORTUNITIES

All children have access to a planned, balanced and broad curriculum regardless of gender, race, religion or disability. The development of self respect and respect for others regardless of these factors is given high priority at Canterbury Road.

ASSEMBLY AND COLLECTIVE WORSHIP

Assemblies are a daily event and takes place as a whole school. It is an opportunity to gather and share values that affect pupil's lives. It also covers whole school themes that link with the children's PSHE lessons and reinforce the school ethos.

The aims of Collective Worship are to allow an individual an opportunity to develop their own character and personality through shared beliefs and experiences. The aim of the collective worship policy is to provide the opportunity for pupils to: worship God, reflect on values that are of a broadly Christian nature and on their own beliefs, develop a community spirit, a common ethos and shared values, consider spiritual and moral issues and respond to the worship offered. Parents have the right to withdraw their child from the act of Collective Worship but are required to discuss this first with the headteacher.



EXTRA-CURRICULAR ACTIVITIES (Clubs)

Children are offered the opportunity to extend their experience by involving themselves in lunch time or after school activities. These opportunities are open to the children and organised by staff and outside agencies. All clubs are currently free and are available to attend in years 1 - 6. There is currently no seperate after school childcare.

Current activities include: netball, football, gardening, dog walking, art and crafts, dance, board games and mindfulness.

The School Day



SCHOOL HOURS

During the school week the children will be involved in learning activities for 24 hrs and 35 minutes.

Morning Session -

Key Stage 1: 8:45am - 12pm
(including a 15 minute break).

Key Stage 2: 8:45am - 12.15pm
(including a 15 minute break).

Afternoon Session

1 pm - 3.15pm

The start of the day

The school gates open at 8.40am and children are welcomed onto the playground . At 8:45am doors are opened and children are encouraged to go straight to their classes to ensure a settled and prompt start to the day. Reception children enter the building through the reception door, KS1 children through their classroom doors and KS2 children through the blue playground doors. The school gates close at 9am and any child arriving after this time will need to enter via the School Road gate and report directly to the office.

The end of the day

School finishes at 3.15pm when KS1 children are brought onto the playground to meet their parents by their teachers. Reception children and KS1 are collected from their classroom door. KS2 children are brought onto the playground to meet their parents by their teachers. Children in Year 5 and 6 may be given permission to walk home on their own from their parents.

CHILDCARE

The school offers an OFSTED registered Breakfast Club which runs every school day from 7.45am. This is a childcare facility open to any pupil of Canterbury Road. The club is run by school staff in our purpose built 'Willows' building in a 'home from home' atmosphere. The breakfast club costs £3.50 per morning. We also have a paid for After School Club at £5 per session until 4:30pm as well as several free extra-curricular clubs.



Lunch Times

BREAKFASTS

Canterbury Road is proud to be part of the National Breakfast Programme offering free bagels and cereal from our Bagel Bar each morning. Year 6 children can volunteer to be “Bagel Buddies” and take bagels to the younger year groups. Children are offered bagels with a choice of toppings or a cereal alternative for specific dietary requirements. Additionally breakfast at Breakfasts Club is also free. This helps foster a sense of community, encourage healthy eating and help children have the right start to the day.

BREAKTIME SNACKS

All children in Years R, 1 and 2 receive a free fruit or vegetable snack each morning break time. Children in Reception class also receive free milk each day.

KS2 children may bring a fresh/dried fruit snack or other healthy snack to eat at breaktime or 30p to buy a snack at the healthy tuck shop. Crisps, sweets, chocolate bars, cake, biscuits or similar are not allowed and your child will not be able to eat it. However, if your child does not have a snack and is hungry, they should ask at the office and they will be *lent* 30p to purchase a snack from the trolley.

LUNCHTIMES

Each class has its own midday meals supervisor during lunchtime who supervises the children in the canteen and playground. Children may bring a healthy packed lunch to school (no fizzy drinks, sweets or chocolate bars) or have a school dinner. Our school meals are cooked on site and children have a choice each day and a vegetarian option is always available as is salad and fruit. All children in year R, 1 and 2 are entitled to a FREE school dinner each day. Older children may have to pay. Our catering company is Nourish Catering who will run a 4 week rolling menu. This menu is emailed out to parents at the start of teach term and school dinners are booked online through our convenient School Money app.

You may be entitled to free dinners for your child if you receive certain benefits—please ask at the office.



Home Learning

Home learning tasks are set on a regular basis and the amount of time children are expected to spend on this varies according to their age. Parents are expected to support their child in completing homework and instructions are given on the work if necessary. KS2 children who have not completed homework will be asked to do so at lunchtime.

YEAR R

Children have their reading book to share with you and may bring home phonemes (sounds) to practise of other little tasks. We ask you to contribute to 'My Unique Story' so we get a full picture of your child's progress.

YEAR 1 & 2

Children have a reading book that should be shared daily. Books are changed on Monday, Wednesday and Friday or as advised. Other work such as numeracy, spellings or science may also be sent home from time to time. In year 1 you can keep up to date with your child's progress via tapestry.

YEAR 3 - 6

These children also have a reading book that should be read daily for at least 15 minutes. Children can choose a book in their range and take an AR test at home or at school to meet their targets.

Children are also sent home with times tables to learn for Times Table Rockstars.

SCHOOL VISITS AND EDUCATIONAL ACTIVITIES

Visits to places of educational value and interest are often arranged for the children to gain first hand experience and support various aspects of their learning. These are always enjoyable and educational and enrich the children's time at Canterbury Road. We also have several residential trips for children in KS2.



Events

To enhance the curriculum and promote learning opportunities, events such as Creativity Week, Book Week, Harvest Festival and Sports day are held regularly throughout the year. These promote fun in learning and give children the opportunity to experience new skills and celebrate learning. Parents are often invited to attend these, join in the fun and celebrate achievements.



SCHOOL POLICY ON CHARGING

In accordance with the Education Reform Act of 1988 regarding the charging of parents for school events, the School's policy is:

1. To make charges as allowed by the Education Reform Act.
2. To encourage Governing Bodies to seek voluntary contributions from parents.

Parents are asked for voluntary contributions to cover the cost of trips and events. We would never exclude a child from a trip/event due to financial restraints at home and are sometimes able to subsidise trips further in case of hardship (the exception to this is residential trips or optional special trips such as going to London to watch Frozen). In extreme cases, if parents are unwilling to fund a trip, the trip may not go ahead. If your child is entitled to a free school meal, the school receives additional funding and we may subsidise the cost of trips. See the Charging policy on the website for more information.



Attendance, Absence and Medicines

If your child is unable to come to school, you must ring or email the school office before 9:30am to let us know. If we do not hear from you, we will text you to enquire after your child. If we continue to have no knowledge of your child's whereabouts we may follow this up with multiple phone calls or a home visit.

Where a message is not received regarding the absence is deemed as 'unauthorised' and this is recorded on the child's attendance record. This cannot be altered when the child returns to school.

Children who are late after the register closes are also deemed to be absent without authorisation and so you are encouraged to ring the office if your child is going to be late. Parents are kept up to date with their child's attendance through reports and termly letter and communications.

Where parents decide to have their child registered at school, they have an additional legal duty to ensure their child attends that school regularly.

Schools have to regularly inform the Local Authority of any pupils who are regularly absent from school, have irregular attendance, or have missed 10 school days or more without the school's permission. Parents can be issued a Fixed Penalty Notice by the Local Authority for their child's non-attendance. The penalty is £80 and this rises to £160 if paid after 21 days but within 28 days. There is no right of appeal against a Fixed Penalty Notice. If this is not paid, the Local Authority can proceed to prosecution or withdraw the notice.

There are no authorised holidays. Holidays should be taken outside of term time. Head teachers are only allowed to grant authorised absence in exceptional circumstances e.g. funeral attendance.

PROJECT 95

At Canterbury Road we operate "Project 95" which aims to ensure all children have an average percentage of 95% across the school year. Every child's attendance is monitored on a termly basis. This can be increased should we have concerns over a child's attendance.

If your child's attendance drops below 95% a letter will be written to you informing you of this, even if the child's absence was authorised due to illness. Classes with the highest attendance are awarded with Attendance Ted each week in assembly and individual children are rewarded for having 100% attendance each term.

MEDICINES AND MEDICATION

A child who is unwell should obviously remain at home until well. On odd occasions your child may be fit for school but still require antibiotics or medication. If you wish us to administer any medicines during the school day you must complete a permission form from the office. The medication must be labelled clearly with the child's name and time and amount of dosage labelled on the bottle or packet and a medicine will need to be kept with the medicine form. The medication will be kept either in the school refrigerator or in the medicine cabinet as appropriate.

Members of staff are trained in Paediatric First Aid and correct administration of medication. Staff will ring parents if they feel that may need to administer medication regarding first aid or during school hours. A record of when medication is given is kept in the school office.

For children requiring regular medication (such as asthma sufferers needing access to inhalers), parents should also complete a medical permission form and label the medicine as above. These inhalers will be kept in the child's classroom for immediate access. It is the parents responsibility to ensure we have working and in date inhalers for their child. Please inform the school as soon as possible should your child's needs or medication change.

Should your child have any particular health or medical issues please speak to a member of staff in the office or Mrs Coldwell who can draw up a Care Plan and we can assure staff are trained in the appropriate circumstances.

Admissions Policy

REGISTERING CHILDREN AND ADMISSIONS POLICY

To register an interest in Canterbury Road Primary School please complete our registration form, available from the school office. This is not an application for school. We will then invite you to open days during the autumn term. Parents must apply for a school place online through KCC and you can access this via the KCC admissions website at www.kent.gov.uk/ola.

Prior to a child starting school, parents are legally required to present their child's birth certificate. We recommend that you email across a scan or bring this in to school rather than post it. We will also ask you to provide:

- An emergency contact telephone number for yourself and for at least one other person so that we can reach you in the event of an accident or illness at school.
- Names of people you are prepared to let your child travel home with in an emergency.
- Proof of address so we can check that you fulfill the criteria for admissions.

As our school is often oversubscribed, Governors employ the Local Authority admission criteria when considering applications. For our school this takes into account:

- Care by local authority
- Special educational or health need
- Sibling links - brothers or sisters currently at the school when the sibling is due to start school (not when application process happens)
- Health, Social or Medical Reasons, supported by appropriate evidence
- Distance from school on the website for specific information.

IN YEAR ADMISSIONS

If you would like to transfer your child to our school during the school year we ask that you complete an In Year Admissions Form. We are currently oversubscribed and every year has a waiting list. Our In Year admissions follows the same admissions criteria as our September admissions and we will rank you on our waiting list. It does not matter how long you have been on the waiting list.

Please see admissions policy on the website for specific information.



School Leavers: Transfer to Secondary School

Most of our children transfer to the following schools for Year 7:

Borden Grammar School for Boys - Selective School

Highsted Grammar School for Girls - Selective School

The Sittingbourne School

Fulston Manor School

Westlands High School

Entry to the schools is via the county admissions scheme. Children wishing to attend Grammar school must successfully pass the Kent Test (11+). Highsted and Borden have their own admission tests. At Canterbury Road we can help make the transition to secondary school as smooth as possible. If you have any concerns please speak to Mrs Brown, Deputy Head and Year 6 class teacher.

Should you wish to leave Canterbury Road Primary School mid year please speak to the school office. You will need to leave a forwarding address and let us know which school you are transferring your child to so we may send on their paperwork. Any child who leaves school in year without a school place will be regarded as a child Missing In Education if we have not made contact after 20 school days and reported to the Local Authority. If you wish to remove your child from school to Home School you must inform the Local Authority that you will be responsible and continuing their education. If you are considering this please speak to a member of staff or Mr Pye directly.



School Uniform

All children wear school uniform as follows:

Shirt/polo shirt/blouse	white
Trousers/shorts/skirt/pinafore dress	grey/black
Summer dress/playsuit/culottes	white and blue checked
Jumper/sweatshirt/fleece	royal blue
Socks	grey/black/white
Shoes	black
Plain sandals with straps	black/grey/white (not flip flops)
Hijab/head scarf	white/blue/grey/black

Items can be purchased from Forsters on East Street. Forsters also have our PE bags and school bags available. We have a school uniform site which you can access on www.myclothing.com. For new Reception children, these items can also be brought at the Reception class open evenings in the July before the children start. If you are struggling please speak to a member of staff as we have a well stocked “uniform swap shop” with good quality second hand uniform. All uniform and PE kit **must** be named. We cannot take any responsibility for lost items of clothing.

PE All children must wear PE kit for PE activities and this must be in school everyday. Kit consists of black shorts and black plimsolls. Trainers may be worn for outdoor PE and KS2 children generally wear these for all PE. T-shirts should be of house team colours and we will let you know this before your child starts. Missing PE due to lack of kit (or non removal of earrings, see below) results in 5 minutes lost Golden Time (reinstated when kit is brought to school).

Earrings- Children may wear small round or square studs but these must be removed on PE days . Staff are not able to do this for children.

Hair –Should be of one colour and of a conventional style. Hair below shoulder length must be fully tied back each day. Bows may be worn but should be less than 10cm and in school colours of blue and/or white. School bows or hair clips are able to be purchased from the PTFA.

Art and craft— For messy activities such as painting we may ask that parents send an old shirt or apron to school to protect clothing.

Current Data

2023 - 2024 End of Year Data

Key Stage 2

Attainment	Maths	Reading	Writing	GPS	Combined
School	EXS+ - 90% GD - 33%	EXS+ - 87% GD - 60%	EXS+ - 73% GD - 20%	EXS+ - 80% GD - 37%	EXS+ - 70% GD - 13%
National	73%	74%	72%	72%	61%

Progress

Maths	Reading	Writing	GPS
Exp- 96% Acc- 25%	Exp- 89% Acc-36%	Exp- 93% Acc-7%	Exp- 100% Acc-36%

Multiplication Check

Exp - 77% (based upon schools own 80% pass mark)

Current Data

2023 - 2024 End of Year Data

Key Stage 1

Attainment	Maths	Reading	Writing	GPS
School	EXS+ - 77% GD - 20%	EXS+ - 57% GD - 10%	EXS+ = 50% GD - 7%	EXS+ -47%

Progress

Maths	Reading	Writing
Exp- 80% Acc- 17%	Exp- 73% Acc- 3%	Exp- 77% Acc-20%

Phonics

Exp - 63%

EYFS

Attainment	Maths	Literacy	GLD
School	Exp - 82%	Exp - 78%	Exp - 64%
National	77%	70%	67%

Staffing

CANTERBURY ROAD SCHOOL STAFF

Head Teacher	Mr T Pye
Deputy Head Teacher	Mrs S Brown
EYFS/Key Stage One leader	Mrs K Martin

Teachers

Year R (Bumblebees)	Mrs K Martin
Year 1	Miss H Ferrett
Year 2	Miss M Bean
Year 3	Miss M Temple
Year 4	Mrs L Bruce
Year 5	Miss A Oxberry
Year 6	Mrs S Brown and Miss J Hayes

DSL	Mr Pye/ Mrs Brown/ Debbie/ Mrs Martin
SENCO	Mrs L Coldwell
SEN Assistant	Mrs M Kelk
School dog	Bea
Family Liaison Officer (FLO)	Mrs Debbie Gallier
Speech and Language TA	Mrs J Thorne
Pastoral Lead	Mrs K Christie
Cover Supervisor	Mrs K O’Ryan

Teaching Assistants

Miss Wilson, Miss Lewis, Mrs Stuart, Mrs Cook, Miss Finn, Mrs Cork, Mrs Horn, Mrs Taljaard, Mrs White, Miss Johnson, Miss Tubb, Mrs Szakacas,

Office Manager	Mrs W Down
Administration Assistant	Mrs J Mace

Site Manager	Mr Smith
School Cleaners	Mrs Ines and Ms Rees

Midday Meals Staff

Ms Matthews, Mrs Milliner, Miss Mitchell, Ms Adnett, Ms Harling, Mrs Smith, Miss Woodcock, Miss Gates, Ms Sobala, Mrs Waite,

Kitchen Staff

School dinners are cooked on premises by staff at Nourish catering company. Abbie Readwin & Carmen Scott are currently allocated to our school

Chair of Governors

Mrs Lindsey Glanville

Children's Services Partnership Manager

Brooke House

Reeves Way

Whitstable

Kent

CT5 3SS

Telephone 03000 414141

ARRANGEMENTS FOR MAKING COMPLAINTS

The school has a policy for dealing with complaints which conforms to national guidance:

We encourage parents to discuss any complaints with the Class Teacher first. If the parent feels that the complaint has not been fairly heard he/she can then discuss it with the Head Teacher. However, a parent who is still dissatisfied can refer the complaint to a Panel of the School's Governing Body via the Chair, Mrs Lindsey Glanville.

There are also further appeal stages to a Panel of the Local Authority and, finally to the Secretary of State for Education



Dates

SCHOOL YEAR 2024 - 2025

Wednesday 5th September First day of term 1 for children

Friday 25th October Last day of term 1

Tuesday 5th November First day of term 2 for children

Friday 20th December Last day of term 2

Tuesday 7th January First day of term 3

Friday 14th February Last day of term 3

Monday 24th February First day of term 4

Friday 4th April Last day of term 4

Tuesday 22nd April First day of term 5

Friday 23rd May Last day of term 5

Tuesday 3rd June First day of term 6

Tuesday 22nd July Last day of term 6

Please note that these dates include five days of closure for staff development and training.

These are 2/9 3/9 4/11 6/1 2/6 for 2024/25



Dear Parents/ Guardians,

Thank you for reading our prospectus. I hope it has answered many of your questions about our school . If you would like to visit or need more information, please ring the number below.



Yours faithfully

Mr T Pye
Head Teacher

Canterbury Road Primary School
School Road
Sittingbourne
Kent
ME10 4SE

Telephone: (01795) 423818

Email: headteacher@canterbury-road.kent.sch.uk

Website: www.canterbury-road.kent.sch.uk

Please feel free to contact Mr Pye if you would like to visit the school

‘Canterbury Road- A Friendly, Happy Place to Learn’

Please note: The information given in this Prospectus relates to the school year beginning in September 2023. Although this information was correct at the time of publication, it should not be assumed that there will be no changes before the start of, or during, the year in question, or in relation to subsequent years.