

Special Educational Needs and Disabilities (SEND) Information Report Canterbury Road Primary School



Inclusion Team

SEND Governors:

Stacey Catton & Karren Stratton

SENCO

Lisa Coldwell

Contact No. 01795 423818

lcoldwell@canterbury-road.kent.sch.uk

Approved by:	Mr T Pye	Date: 16.10.25
Last reviewed on:	September 2025	
Next review due by:	September 2026	

Contents

1. What types of SEND does the school provide for?	4
2. Which staff will support my child?.....	5
3. What should I do if I think my child has SEND?	7
4. What happens if the school identifies a need?	8
5. How will the school measure my child’s progress?	9
6. How will I be involved in decisions made about my child’s education?.....	10
7. How will my child be involved in decisions made about their education?	11
8. How will the school adapt its teaching for my child?	122
9. How will the school evaluate whether the support in place is helping my child?	133
10. How will the school ensure my child has appropriate resources?	133
11. How will the school make sure my child is included in activities alongside pupils who don’t have SEND?.....	144
12. How does the school make sure the admissions process is fair for pupils with SEN or a disability?	145
13. How does the school support pupils with disabilities?	155
14. How will the school support my child’s mental health and emotional and social development?	156
15. What support is in place for looked-after and previously looked-after children with SEN?	166
16. What support will be available for my child as they transition between classes or settings or in preparing for adulthood?.....	17
17. What support is available for me and my family? (Local Offer)	178
18. What should I do if I have a complaint about my child’s SEND support?	19
19. Supporting Documents.....	19
20. Glossary.....	20

Kent SEND Information Report

Dear parents and carers,

The aim of this Information Report is to explain how we implement our SEND policy. In other words, we want to show you how SEND support works in our school.

As educational professionals, we are all working towards the ultimate goal of growing independent young people as they prepare for adulthood. All provision and support we provide is working towards achieving the Kent Children and Young People (CYP) Outcomes Framework:



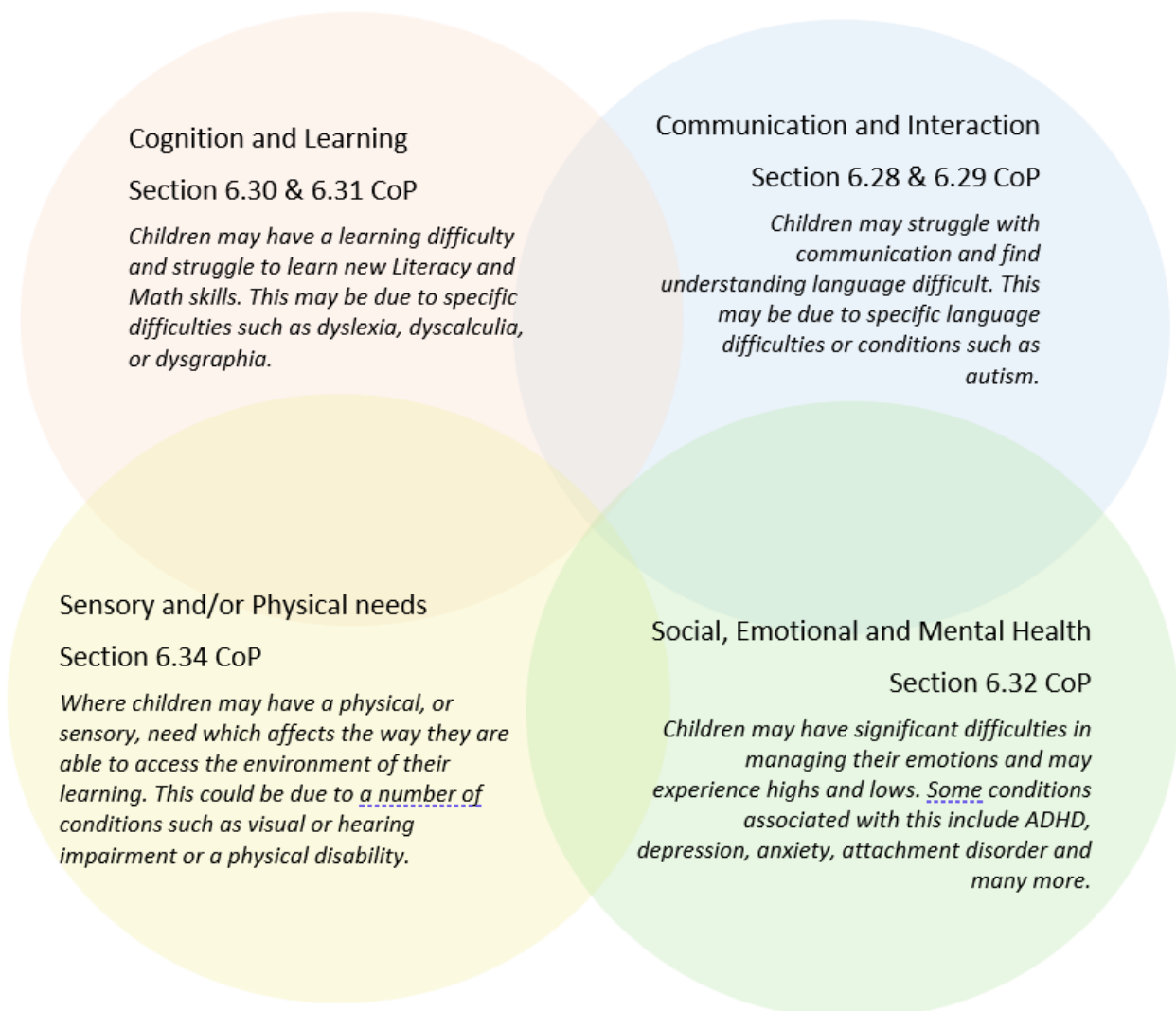
If you want to know more about our arrangements for SEND, read our SEND policy alongside this Information Report.

You can find our SEND policy on our website <https://www.canterbury-road.kent.sch.uk/about-our-school/policies>

Note: If there are any terms we've used in this information report that you're unsure of, you can look them up in the Glossary at the end of the report.

1. What types of SEND does the school provide for?

Our school provides for pupils with the following needs (as outlined in the SEND Code of Practice 2015):



Often you will find that children's needs overlap and are rarely confined to one area of need, which is why it is important to gain a wholistic overview of your child.

Kent SEND Information Report

More information about the Areas of Need can be found in the Special educational needs and disability code of practice: 0 to 25 years (link below).

[SEND Code of Practice January 2015.pdf \(publishing.service.gov.uk\)](#)

2. Which staff will support my child, and what are their key responsibilities?



At Canterbury Road all staff are considered responsible for supporting the needs of pupils with SEND. Our staff are committed to regular, high-quality training to ensure that they have the knowledge and skills to better meet a wide range of pupil needs.

Below outlines key staff who will be supporting your child. *Please note that this list is not exhaustive.*

Our Special Educational Needs Co-ordinator, or SENCO

Our SENCO is **Mrs Lisa Coldwell**

She has over fifteen years' experience in this role and has worked as a class teacher, a teacher in a speech and language unit and a SENCo in two other schools. She is a qualified teacher and is a qualified dyslexia assessor. Mrs Coldwell achieved the National Award in Special Educational Needs Co-ordination in 2016

Our SENCo assistant is Mrs Maria Kelk. She is a qualified teacher, with over twenty years' experience. She supports Mrs Coldwell with the administrative roles and works with the children who need additional speech and language provision.

Mrs Christie is the Pastoral Lead and works with children to support their social and emotional wellbeing.

Debbie is our Family Liaison Officer (FLO) she supports families in many different ways, offering advice on parenting strategies, and supporting families with any home or schools worries. If families are struggling financially she is there to signpost to services such as the food bank.

Class/subject teachers

All of our teachers receive in-house SEN training, and are supported by the SENCO to meet the needs of pupils who have SEN.

Staff have had recent training on dyslexia, speech and language and autism training from the Autism Education Trust.

Teaching assistants (TAs)

We have a team of TAs, who are trained to deliver SEN provision. They are trained in interventions such as Little Wandle, Precision Teaching, Pre teaching (vocabulary and maths), Beam, Sensory Circuits, and Language Through Colour.

We have two teaching assistants who deliver Speech and Language therapy programmes devised by trained Speech and Language Therapists.

External agencies

Sometimes we need extra help to offer our pupils the support they need. Whenever necessary we will work with external support services to meet the needs of our pupils with SEND and to support their families. These may include:

- Speech and Language therapist, both our own private therapist and the NHS therapy service
- Community paediatricians
- Specialist Teaching and Learning Service
- School nursing service
- SEND Inclusion Advisor
- A link Educational Psychologist

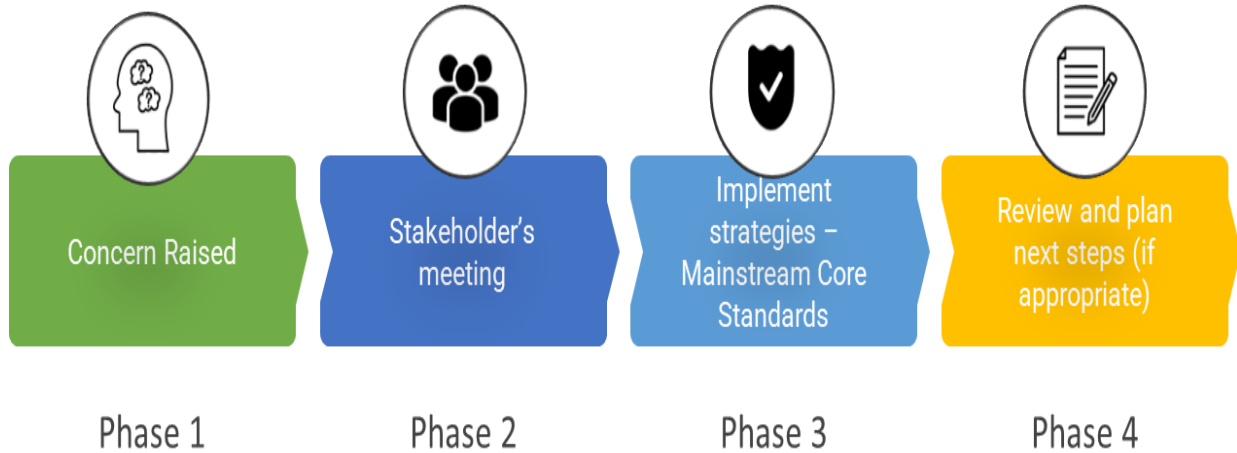
3. What should I do if I think my child has SEND?



<p>Phase 1</p>	<p>If you think your child might have SEND, raise your concern with the school so that the SENCO is aware.</p> <p>Speak to your child’s class teacher to raise any concerns you may have. Strategies may be discussed or put in place and where necessary the SENCO will be informed and a meeting arranged.</p>
<p>Phase 2</p>	<p>We will meet with you to discuss your concerns and try to get a better understanding of what your child’s strengths and difficulties are. Together we will decide what outcomes to seek for your child and agree on next steps. We will make a note of what’s been discussed and add this to your child’s record. These meetings may be held with the SENCO, the Pastoral Lead, the FLO or a combination of these professionals.</p>
<p>Phase 3</p>	<p>We will implement the agreed strategies and monitor these over an agreed period of time. These are likely to be universal strategies set out in the mainstream core standards. A copy of this can be found here: https://www.kelsi.org.uk/ data/assets/pdf file/0005/117257/Special-educational-needs-mainstream-core-standards-guide-for-parents.pdf . This will initiate the ‘Graduated Approach’ where support will be continually reviewed. See next page for more details.</p>
<p>Phase 4</p>	<p>If we decide that your child needs SEND support, we will formally notify you and your child will be added to the school’s SEND register. They will receive</p>

	additional support and this will be reviewed using the assess, plan, do, review model.
--	--

4. What happens if the school identifies a need?



All our class teachers are responsible for the monitoring of all pupils who have been identified as having SEND. They also review those who are not making the expected level of progress in their schoolwork or socially. This happens formally each term at a Pupil Progress Meeting, held with the class teacher, assessment coordinator and the SENCo.

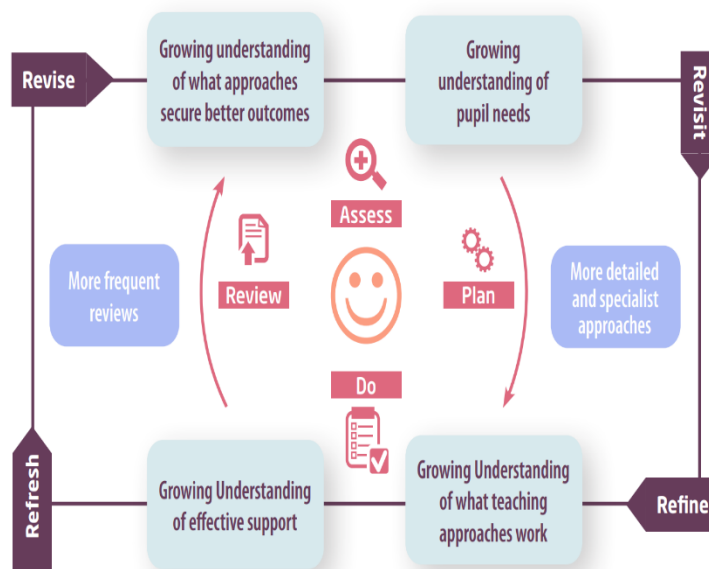
If the teacher notices that a pupil is having difficulties, they try to find out if the pupil has any gaps in their learning. If they can find a gap, the school will provide appropriate support. Pupils who don't have SEND usually make progress quickly once the gap in their learning has been filled.

If the pupil is still finding it difficult to make the expected progress, the teacher will talk to the SENCo, and will contact you to discuss the possibility that your child has SEND, and the school will follow the graduated approach (see previous page).

5. How will the school measure my child's progress?

We will follow the 'graduated approach' to meeting your child's SEND needs.

The graduated approach is a 4-part cycle of **assess, plan, do, review**.



Assess	If your child is not making the expected level of progress, we will make an assessment to find out what strengths and difficulties your child has. We will ask for you and your child's input, as well as getting help from external professionals where necessary.
Plan	In discussion with you and your child, we will decide what outcomes we are hoping to achieve. We will make a plan of the support we will offer your child to help them meet those outcomes. We will make a record of this and share it with you and all relevant school staff.
Do	We will put our plan into practice. The class teacher, with the support of the SENCo, will be responsible for working with your child on a daily basis, and making sure the support we put in place is having the impact we intended.
Review	We will assess how well the support we put in place helped the pupil to meet the outcomes we set. We will use our improved understanding of your child's needs to improve the support we offer; this may mean the Plan, Assess, Do, Review cycle continues.

6. How will I be involved in decisions made about my child's education?

We will provide reports on your child's progress three times a year.

A member of staff who knows your child well will meet you three times a year to:

- Set clear outcomes for your child's progress
- Review progress towards those outcomes
- Discuss the support we will put in place to help your child make that progress
- Identify what we will do, what we will ask you to do, and what we will ask your child to do

The SENCO may also attend these meetings to provide extra support.

We know that you're the expert when it comes to your child's needs and aspirations. So, we want to make sure you have a full understanding of how we're trying to meet your child's needs, so that you can provide insight into what you think would work best for your child.

We also want to hear from you as much as possible so that we can build a better picture of how the SEND support we are providing is impacting your child outside of school.

If your child's needs or aspirations change at any time, please let us know right away so we can keep our provision as relevant as possible.

If you have concerns that arise between these meetings, please contact your child's class teacher through the school office or the SENCo via the email office@canterbury-road.kent.sch.uk or on 01795 423818

7. How will my child be involved in decisions made about their education?

The level of involvement will depend on your child's age and individual needs. We recognise that no two pupils are the same, so we will decide on a case-by-case basis, with your input.

We may seek your child's views by asking them to:

- Attend meetings to discuss their progress and outcomes
- Prepare a presentation, written statement, video, drawing, etc.
- Discuss their views with a member of staff who can act as a representative during the meeting
- Complete a survey



8. How will the school adapt its teaching for my child?


Your child's teacher is responsible and accountable for the progress and development of all the pupils in their class.



High-quality teaching is our first step in responding to your child's needs. We will make sure that your child has access to a broad and balanced curriculum in every year they are at our school.


We will adapt our approaches to how we teach to suit the way the pupil works best. There is no 'one size fits all' approach to adapting the curriculum, we work on a case-by case basis to make sure the adaptations we make are meaningful to your child and are guided by the Mainstream Core Standards in the first instance.

These adaptations may include:

- Adapting our approaches, for example, giving longer processing times, pre-teaching of key vocabulary, reading instructions aloud, movement breaks etc.

-  ➤ Adapting our resources, for example altering worksheets or resources to be more accessible, using writing slopes or pencil grips to aid handwriting, using visual symbols to support understanding.

-  ➤ Using recommended aids, such as laptops, the use of Clicker 8, visual timetables, larger font, etc.
-  ➤ Teaching assistants or support staff will support pupils appropriately depending on their presentation of need

-  ➤ Scaffolding lesson materials

We may also provide the following interventions:

- Speech and language
- Pre-teaching vocabulary and maths
- Little Wandle Catch up/Keep Up
- 1:1 Reading
- Handwriting
- Fine motor skills
- Social Skills groups

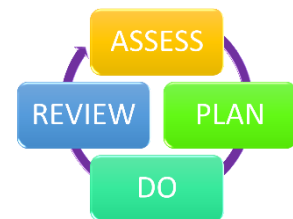
- Drawing and Talking
- ELSA
- Precision Teaching
- Sensory Circuits
- Beam
- Pastoral support

These interventions are part of our contribution to Kent County Council's local offer.

9. How will the school evaluate whether the support in place is helping my child?

We will evaluate the effectiveness of provision for your child by:

- Reviewing their progress towards their goals each term
- Reviewing the impact of interventions termly, or sooner if necessary
- Using pupil questionnaires
- Monitoring by the SENCo
- Using provision maps to measure progress
- Holding an annual review (if they have an education, health and care (EHC) plan)



10. How will the school ensure my child has appropriate resources?

It may be that your child's needs mean we need to provide additional resources such as:

- Additional resources to support their learning
- Adaptations to in class support
- Further training for our staff
- External specialist expertise

Where appropriate, we will consult with external agencies to get recommendations on what will best help your child access their learning and use our best endeavours to ensure these are supplied.

11. How will the school make sure my child is included in activities alongside pupils who don't have SEND?



The expectation is that all schools will provide an inclusive provision for all pupils and at Canterbury Road we pride ourselves on ensuring each child is valued for the individual that they are. It may be necessary for some pupils to receive interventions in addition to a broad and balanced curriculum.

All of our extra-curricular activities and school visits are available to all our pupils, including our before and after-school clubs.

All pupils are encouraged to go on our school trips, including residential trips.

All pupils are encouraged to take part in additional school activities, such as sports day, school plays and visiting workshops

No pupil is ever excluded from taking part in these activities because of their SEN or disability and we will make whatever reasonable adjustments are needed to make sure that they can be included.

12. How does the school make sure the admissions process is fair for pupils with SEN or a disability?



Through adherence to the KCC admissions policy we:

- Work to maintain an inclusive environment making school accessibility a priority.

- All prospective pupils whose EHC plan names the school will be admitted before any other places are allocated.
- To ensure a smooth and steady start to school life at Canterbury Road we will discuss your child's needs with you at the earliest opportunity. Collaboration between us and your child's previous setting will help us to make detailed, personalised plans based on your child. Should external agencies be involved, we will liaise directly with them to ascertain what level of support will need to be provided. Our admissions process is fair and we do not discriminate against any protected characteristic, please view our Admissions Criteria and Policy on the schools website by following this [link](#).

13. How does the school support pupils with disabilities?



You're disabled under the Equality Act 2010 if you have a physical or mental impairment that has a 'substantial' and 'long-term' negative effect on your ability to do normal daily activities.

It is important for us that every child is recognised for their individuality and we will ensure our plans support any of their needs. Where necessary we work with external agencies to ensure we have the most current training, and we have adapted our school to ensure it is accessible for all. Please see further details on our Accessibility Plan Policy, found here

14. How will the school support my child's mental health and emotional and social development?

We provide support for pupils to progress in their emotional and social development in the following ways:

- We have a Pastoral Lead (Mrs Christie) who is a trained ELSA. Mrs Christie will deliver programmes to support pupils struggling with their emotions, their self-esteem and will help them to have a clear understanding of their own emotional needs.
- Pupils with SEND are encouraged to take part in all of school life, including the wide variety of clubs on offer.
- We run a lunchtime club for pupils who need extra support during the lunch break.
- We have a 'zero tolerance' approach to bullying. All instances of bullying are dealt with by the Senior Leadership Team in accordance with our Anti-Bullying Policy.

15. What support is in place for looked-after and previously looked-after children with SEND?



Mrs Coldwell is the designated teacher for Looked After Children. She works with all teachers and additional class staff, to make sure that they all understand how a looked-after or previously looked-after pupil's circumstances and their SEND might interact, and what the implications are for teaching and learning.

Pupils who are looked-after or previously looked-after will be supported much in the same way as any other child who has SEND. However, looked-after pupils will also have a personal education plan (PEP). We will make sure that the PEP and any SEND support plans or EHC plans are consistent and complement one another.

16. What support will be available for my child as they transition between classes or settings or in preparing for adulthood?

Between years

To help pupils with SEND be prepared for a new school year we:



- Ask both the current teacher and the next year's teacher to attend final meeting of the year when the pupil's SEND is discussed
- Let the children go in to their new year group with the new staff for an afternoon and the following morning towards the end of the summer term.
- Provide pupils with transition booklets with key information and photographs relating to their new class.
- Arrange for the pupil to visit the school before it opens for the next Academic Year, so they can become familiar with the layout and ease the pressure of the first day

Between schools

When your child is moving on from our school, we will ask you and your child what information you want us to share with the new setting.

Between phases.

For those children coming from Nursery into the Reception Class the staff will :-

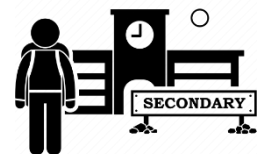
- Hold a parent information evening
- Hold a Teddy Bear's picnic for the children and their parents
- Run 'stay and play' sessions and a 'stay for story' session.
- The staff will do a home visit to each of the families.

For children moving up to secondary school :-

The SENCO (or the Y7 lead) of the secondary school will come into our school for a meeting with our SENCO or class staff. They will discuss the needs of all the pupils who are receiving SEND support.

Pupils will be prepared for the transition by: -

- Learning how to get organised independently
- Plugging any gaps in knowledge
- Visit the secondary school.



For children who need a more robust transition, Mrs Christie, the Pastoral Lead will work in small groups or individual settings to support the pupil further.

17. What support is available for me and my family?

If you have questions about SEND, or are struggling to cope, please get in touch to let us know. We want to support you, your child and your family.

Kent SEND Information Report

To see what support is available to you locally, have a look at Kent County Council's Local Offer (SEND Information Hub). You can find it on the SEN and Inclusion page or follow this link - <https://www.kent.gov.uk/education-and-children/special-educational-needs-and-disabilities>

Our local special educational needs and disabilities information advice and support services (SENDIASS) organisations are:

<https://www.kent.gov.uk/education-and-children/special-educational-needs-and-disabilities/listening-to-your-voice-and-taking-action/information-advice-and-support-kent>

Local charities that offer information and support to families of pupils with SEND are:

For Us Too <https://www.forustoo.org>

National charities that offer information and support to families of pupils with SEND are:

- [IPSEA](#)
- [SEND family support](#)
- [NSPCC](#)
- [Family Action](#)
- [Special Needs Jungle](#)

18. What should I do if I have a complaint about my child's SEND support?

Complaints about SEND provision in our school should be made to the SENCo in the first instance. You can email her on lcoldwell@canterbury-road.kent.sch.uk They will then be referred to the school's complaints policy.

If you are not satisfied with the school's response, you can escalate the complaint. In some circumstances, this right also applies to the pupil themselves.

To see a full explanation of suitable avenues for complaint, see pages 246 and 247 of the [SEND Code of Practice](#).

If you feel that our school discriminated against your child because of their SEND, you have the right to make a discrimination claim to the first-tier SEND tribunal. To find out how to make such a claim, you should visit: <https://www.gov.uk/complain-about-school/disability-discrimination>

You can make a claim about alleged discrimination regarding:

- Admission
- Exclusion
- Provision of education and associated services

- Making reasonable adjustments, including the provision of auxiliary aids and services

Before going to a SEND tribunal, you can go through processes called disagreement resolution or mediation, where you try to resolve your disagreement before it reaches the tribunal.

19. Supporting documents

- *Equality Information and Objectives Policy*
- *Child protection and safeguarding policy*
- *Behaviour Policy*
- *Accessibility Plan*
- *Attendance and punctuality policy*
- *SEND policy*

- *SEN & Disabilities Code Of Practice 2015*
- *Mainstream Core Standards*



20. Glossary

- **Access arrangements** – special arrangements to allow pupils with SEND to access assessments or exams
- **Annual review** – an annual meeting to review the provision in a pupil's EHC plan
- **Area of need** – the 4 areas of need describe different types of needs a pupil with SEND can have. The 4 areas are communication and interaction; cognition and learning; physical and/or sensory; and social, emotional and mental health needs.
- **CAMHS** – child and adolescent mental health services
- **Differentiation** – when teachers adapt how they teach in response to a pupil's needs
- **EHC needs assessment** – the needs assessment is the first step on the way to securing an EHC plan. The local authority will do an assessment to decide whether a child needs an EHC plan.
- **EHC plan** – an education, health and care plan is a legally-binding document that sets out a child's needs and the provision that will be put in place to meet their needs.
- **First-tier tribunal/SEND tribunal** – a court where you can appeal against the local authority's decisions about EHC needs assessments or plans and against discrimination by a school or local authority due to SEND
- **Graduated approach** – an approach to providing SEND support in which the school provides support in successive cycles of assessing the pupil's needs, planning the provision, implementing the plan, and reviewing the impact of the action on the pupil
- **Intervention** – a short-term, targeted approach to teaching a pupil with a specific outcome in mind
- **Local offer** – information provided by the local authority which explains what services and support are on offer for pupils with SEND in the local area
- **Outcome** – target for improvement for pupils with SEND. These targets don't necessarily have to be related to academic attainment
- **Reasonable adjustments** – changes that the school must make to remove or reduce any disadvantages caused by a child's disability
- **SENCO** – the special educational needs co-ordinator
- **SEN** – special educational needs
- **SEND** – special educational needs and disabilities
- **SEND Code of Practice** – the statutory guidance that schools must follow to support pupils with SEND
- **SEND information report** – a report that schools must publish on their website, that explains how the school supports pupils with SEND
- **SEND support** – special educational provision which meets the needs of pupils with SEND
- **Transition** – when a pupil moves between years, phases, schools or institutions or life stages